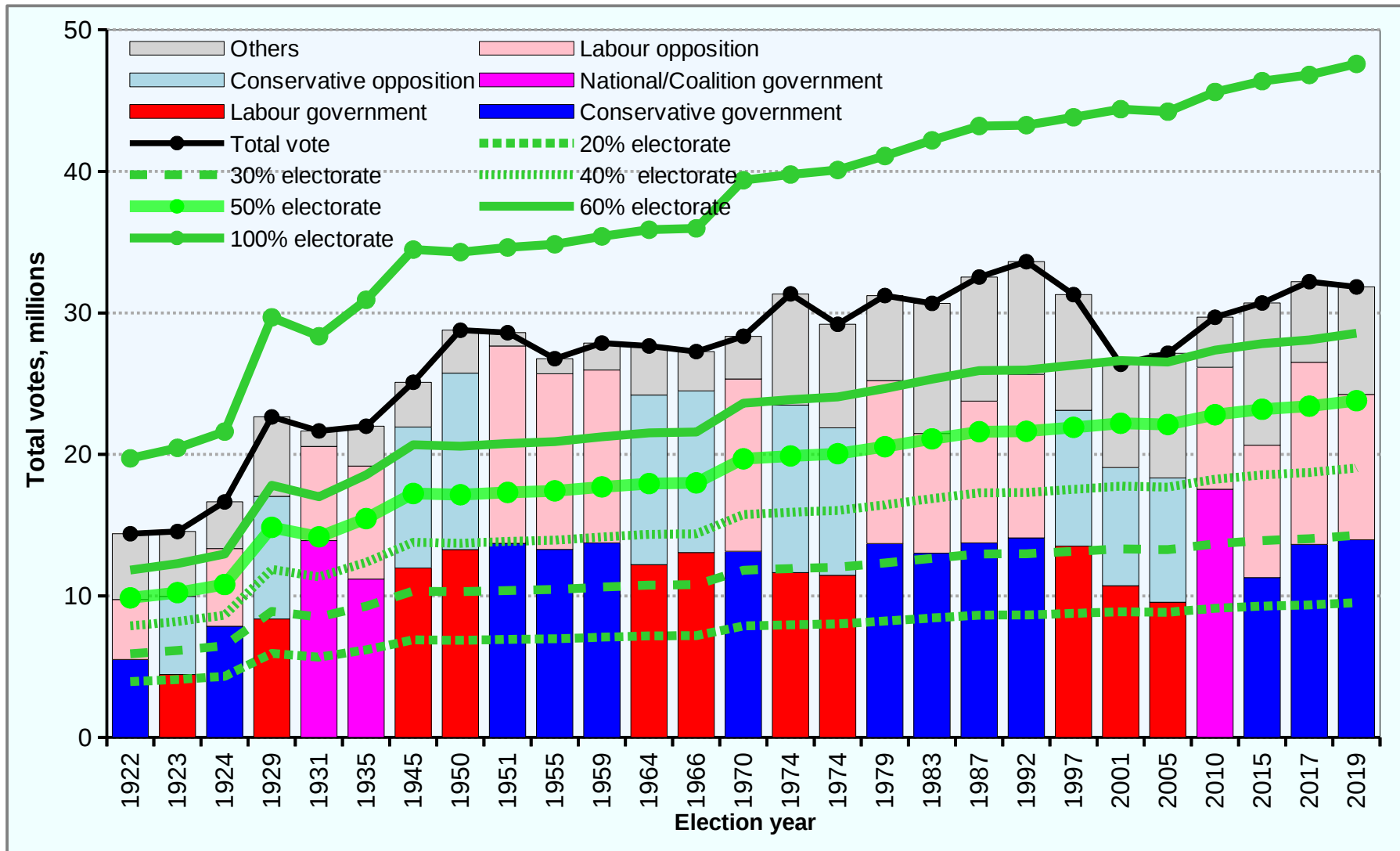


Source Data

'UK Democracy Chart, 2019': Source Data

Year	Government, millions			Votes cast, millions				Electorate, millions						Population	Turnout
	Conservative government	Labour government	National/Coalition government	Conservative opposition	Labour opposition	Others	Total vote	20% electorate	30% electorate	40% electorate	50% electorate	60% electorate	100% electorate		
1922	5.50				4.24	4.65	14.39	3.94	5.91	7.89	9.86	11.83	19.72	44.33	73.0%
1923		4.44		5.51		4.59	14.55	4.09	6.14	8.18	10.23	12.28	20.46	44.56	71.1%
1924	7.85				5.49	3.30	16.64	4.32	6.48	8.64	10.81	12.97	21.61	44.89	77.0%
1929		8.37		8.66		5.62	22.65	5.94	8.90	11.87	14.84	17.81	29.68	45.73	76.3%
1931			13.90		6.65	1.10	21.66	5.67	8.50	11.34	14.17	17.01	28.35	46.07	76.4%
1935			11.18		7.98	2.82	21.99	6.18	9.28	12.37	15.46	18.55	30.92	46.87	71.1%
1945		11.97		9.97		3.16	25.10	6.89	10.34	13.79	17.24	20.68	34.47	48.67	72.8%
1950		13.27		12.47		3.04	28.77	6.86	10.29	13.72	17.15	20.58	34.29	50.38	83.9%
1951	13.72				13.95	0.93	28.60	6.92	10.39	13.85	17.31	20.77	34.62	50.29	82.6%
1955	13.29				12.41	1.07	26.76	6.97	10.45	13.94	17.42	20.91	34.84	50.95	76.8%
1959	13.75				12.22	1.90	27.86	7.08	10.62	14.16	17.70	21.24	35.40	51.96	78.7%
1964		12.21		11.98		3.47	27.66	7.17	10.76	14.35	17.94	21.52	35.87	53.99	77.1%
1966		13.07		11.42		2.78	27.26	7.19	10.79	14.39	17.98	21.58	35.97	54.64	75.8%
1970	13.15				12.18	3.02	28.34	7.87	11.81	15.75	19.68	23.62	39.37	55.63	72.0%
1974		11.65		11.83		7.86	31.34	7.95	11.93	15.91	19.89	23.86	39.77	56.24	78.8%
1974		11.46		10.43		7.31	29.19	8.02	12.03	16.04	20.05	24.06	40.09	56.24	72.8%
1979	13.70				11.51	6.02	31.22	8.22	12.32	16.43	20.54	24.65	41.08	56.24	76.0%
1983	13.01				8.46	9.20	30.67	8.44	12.66	16.88	21.09	25.31	42.19	56.32	72.7%
1987	13.74				10.03	8.76	32.53	8.64	12.96	17.28	21.60	25.92	43.20	56.80	75.3%
1992	14.09				11.56	7.96	33.61	8.65	12.98	17.30	21.63	25.96	43.26	57.58	77.7%
1997		13.52		9.60		8.17	31.29	8.76	13.15	17.53	21.91	26.29	43.82	58.31	71.4%
2001		10.72		8.34		7.30	26.37	8.88	13.32	17.76	22.19	26.63	44.39	59.11	59.4%
2005		9.55		8.78		8.81	27.15	8.84	13.26	17.69	22.11	26.53	44.22	60.41	61.4%
2010			17.54		8.61	3.54	29.69	9.12	13.68	18.24	22.80	27.36	45.60	62.76	65.1%
2015	11.30				9.35	10.05	30.70	9.27	13.91	18.55	23.19	27.82	46.37	64.88	66.2%
2017	13.64				12.88	5.69	32.20	9.36	14.04	18.72	23.40	28.09	46.81	65.81	68.8%
2019	13.97				10.27	7.59	31.83	9.52	14.28	19.03	23.79	28.55	47.59	66.44	67.3%

Source Data



Source Data

Election winners and votes cast

Election year	Government	% votes cast	% electorate
1922	Conservative	38%	28%
1923	Labour	31%	22%
1924	Conservative	47%	36%
1929	Labour	37%	28%
1931	National	64%	49%
1935	National	51%	36%
1945	Labour	48%	35%
1950	Labour	46%	39%
1951	Conservative	48%	40%
1955	Conservative	50%	38%
1959	Conservative	49%	39%
1964	Labour	44%	34%
1966	Labour	48%	36%
1970	Conservative	46%	33%
1974	Labour	37%	29%
1974	Labour	39%	29%
1979	Conservative	44%	33%
1983	Conservative	42%	31%
1987	Conservative	42%	32%
1992	Conservative	42%	33%
1997	Labour	43%	31%
2001	Labour	41%	24%
2005	Labour	35%	22%
2010	Coalition	59%	38%
2015	Conservative	37%	24%
2017	Conservative	42%	29%
2019	Conservative	44%	29%

Referendum 2016

Leave	17,410,742	51.9%	37.44%
Remain	16,141,241	48.1%	34.71%
Did not vote	12,922,659		27.79%
Spoiled	25,359	0.1%	0.05%
Electorate	46,500,001		100.00%
Cast	33,577,342		

- Leave
- Remain
- Did not vote
- Spoiled

